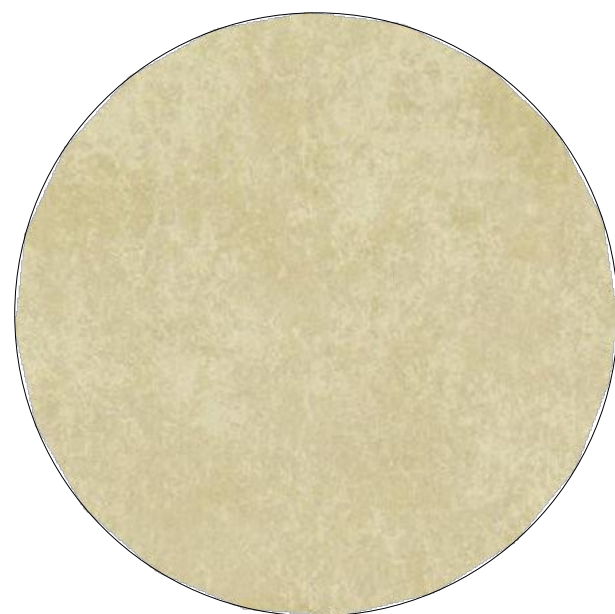


1 SMOOTH STUCCO FINISH
SW-7005 PURE WHITE
SHERWIN-WILLIAMS
OR EQUIVALENT APPROVED
BY ARCHITECT



2 SMOOTH STUCCO FINISH
AF-685 THUNDER
BENJAMIN MOORE
OR EQUIVALENT APPROVED
BY ARCHITECT



3 SMOOTH STUCCO FINISH
CHAMPAGNE GOLD
OR EQUIVALENT APPROVED
BY ARCHITECT



4 ALUMINUM CLADDING PANELS
CHAMPAGNE GOLD
OR EQUIVALENT APPROVED
BY ARCHITECT



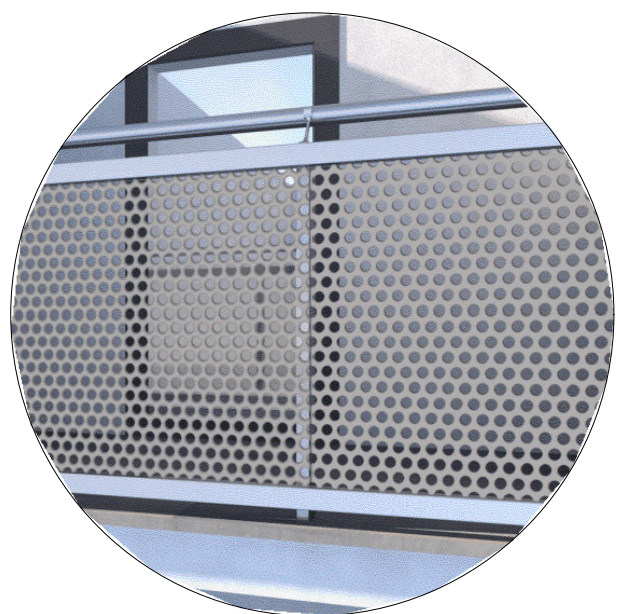
5 WOOD-POLYPROPYLENE COMPOSITE
NICHIIA RIFTSAWN CHESTNUT
OR EQUIVALENT APPROVED
BY ARCHITECT



6 TINTED GLASS FOR STOREFRONTS,
WINDOWS, BALCONY DOORS
VIRACON OPTIGRAY
OR EQUIVALENT APPROVED
BY ARCHITECT



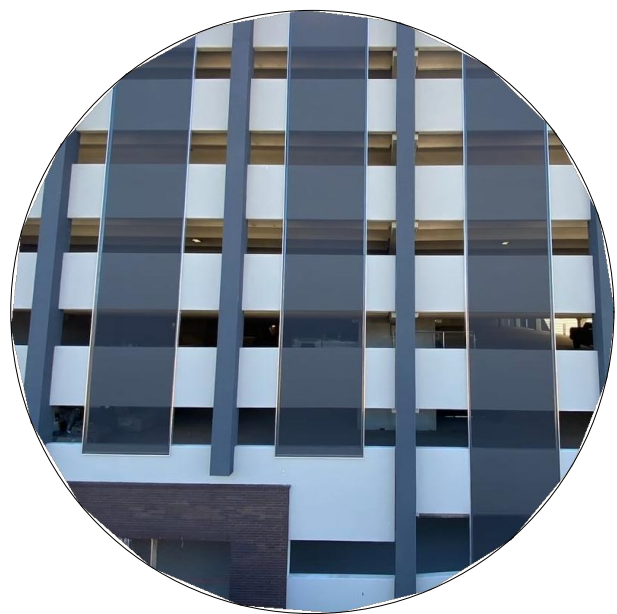
7 ALUMINUM FRAME
2134-30 IRON MOUNTAIN
BENJAMIN MOORE
OR EQUIVALENT APPROVED
BY ARCHITECT



8 METAL MESH RAILING
CHAMPAGNE GOLD
OR EQUIVALENT APPROVED
BY ARCHITECT



9 FACTORY PAINTED
ALUMINUM EXTRUSIONS
WOOD COLOR
OR EQUIVALENT APPROVED
BY ARCHITECT



10 PARKING GARAGE SCREENING
VENTILATED METAL MESH



DRC

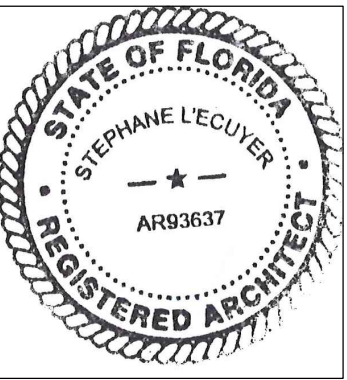
PZ24-12000027

04/16/2025

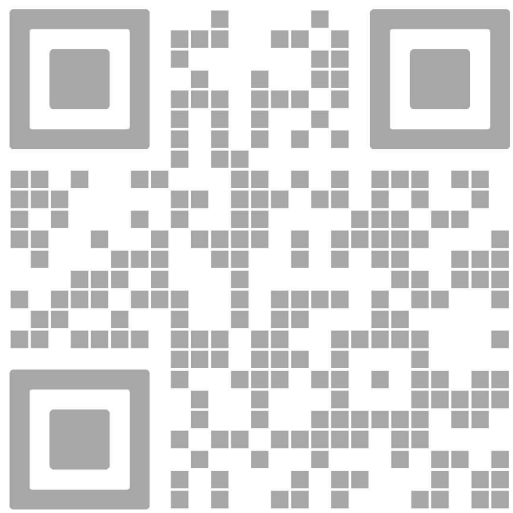


absolute-idea.com
CANAL PARK
3323 NE 163rd Street, Suite 200 North Miami Beach, FL 33160
T 305.792.0015 F 305.931.0279 E info@absolute-idea.com

SEAL
TO THE BEST OF MY
KNOWLEDGE, THE PLANS
AND SPECIFICATIONS
COMPLY WITH THE
APPLICABLE MINIMUM
BUILDING CODES AND THE
APPLICABLE FIRE-SAFETY
STANDARDS AS DETERMINED
BY THE LOCAL AUTHORITY IN
ACCORDANCE WITH THIS
SECTION AND 633 FLORIDA
STATUTES.
STEPHANE L'ECUYER
AR 93637



ISSUE FOR:
DRC SUBMITTAL



REV.	DATE	DESCRIPTION
01	01-29-2025	D.R.C. SUBMITTAL

ALL MEASUREMENTS MUST BE VERIFIED BEFORE
BEGINNING THE WORKS. NO MEASUREMENTS ARE TO
BE SCALED DIRECTLY FROM THIS DRAWING.

Key section

Client
VERA FUND
NICK POLYUSHKIN
& YURI KHARITONENKOV
TEL: 305.833.3303

Project
**1600 S FEDERAL HIGHWAY
(MIXED-USE PROJECT)**
1600 SOUTH FEDERAL HIGHWAY,
POMPAHO BEACH, FL 33062

Title
EAST ELEVATION

Drawn
J. WU
Verified
N. TREMBLAY
Approved
S. L'ECUYER

Field
ARCHITECTURE
Scale
as shown
Date
03-12-2025
Project Manager
J. WU
Project
24-838
Dwg. no.
A-504

01 EAST ELEVATION
A-504 SCALE: 1"= 40'-0"